

PLEASE NOTE

# A MEDICALLY VULNERABLE PERSON LIVES HERE

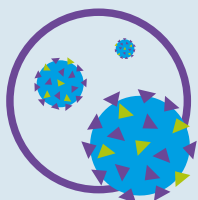


A medically vulnerable person is someone who is likely to become severely ill with COVID-19. Visitors are welcome; however, please take a minute to read this before you enter.

## ENSURE YOU ARE DOING ALL YOU CAN TO KEEP THIS PERSON SAFE.

- ✓ **Wash your hands thoroughly** with soap and warm water for 20 seconds before entering
- ✓ **Use an antibacterial disinfectant** if washing your hands is not possible
- ✓ **Avoid physical contact and practice social distancing** during your visit by staying two meters apart
- ✓ If it does not affect your breathing, **wear a cloth face covering** that covers your nose and mouth
- ✓ **If you cannot wear a mask**, ensure that you cover your nose and mouth with a tissue when coughing or sneezing. Please bring your tissues home with you. If no tissue is available, cough or sneeze into elbow or upper sleeve
- ✓ **Limit contact with surfaces** in the home including door handles

**PLEASE DO NOT VISIT** if you have recently tested positive for COVID-19, if you have been in direct contact with someone who has tested positive for COVID-19, or if you have experienced any COVID-19 related symptoms (cough, fever, fatigue, loss of taste or smell, or any flu-like symptoms)



**FIGHTING  
CORONAVIRUS  
WITH EVERY  
BREATH**

[asthma.ie](http://asthma.ie)

CHY no: 6100

ASTHMA ADVICELINE

**1800 44 54 64**

COPD ADVICELINE

**1800 83 21 46**

ASTHMA & COPD BEATING BREATHLESSNESS  
WHATSAPP PATIENT SERVICE

MESSAGE **086 059 0132**

[nurse@asthma.ie](mailto:nurse@asthma.ie)